

# 2024 NATURAL RESOURCE MANAGEMENT GUIDE





## **FORWARD**

This guide is an attempt to communicate planned restoration activities by the Forest Preserve District's natural resource management staff in 2024. This guide is not a comprehensive list of tasks that will be accomplished, rather it is an outline of potential projects that may be completed dependent on time, weather, and other circumstances. Changes and additions to this guide may occur.



## 2024 NATURAL RESOURCE MANAGEMENT GUIDE

### TABLE OF CONTENTS

Goals and Objectives.....	1
---------------------------	---

#### **2023 Natural Resource Accomplishments**

Natural Resource Management Highlights.....	3-10
Prescribed Burn Summary .....	11 - 12
Seed Harvest Summary .....	13 - 17

#### **2024 Natural Resource Department Objectives**

General Timeline for Management Activities.....	19
Priority Invasive Species.....	20-21
Management Activities by Preserve .....	22-26
Prairie Seeding Map.....	27
Priority Clearing Projects .....	28-29
Prescribed Burn Plans.....	30-32

## FOREST PRESERVES OF WINNEBAGO COUNTY NATURAL RESOURCE MANAGEMENT

### Goal:

The Forest Preserves of Winnebago County's Natural Resource Department works to preserve and restore the ecological conditions that support native plant and animal communities in the county's prairies, wetlands and woodlands.

### Management Objectives:

1. Monitor status and historical distribution of native plant and wildlife communities.
2. Identify and protect endangered and threatened species.
3. Return natural conditions such as fire and hydrology to our natural areas.
4. Control and eliminate the spread of non-native and invasive plant species from natural areas.
5. Manage wildlife populations in order to control loss of habitat and plant diversity.
6. Perpetuate biodiversity by reintroducing native plant and wildlife species to their appropriate physical environment.
7. Resource staff time is invested in three main categories of work. In order of priority, they are:
  1. Invasive species control including:
    - a. Prescribed burns
    - b. Chemical application
    - c. Mowing
    - d. Tree and woody plant removal
  2. New plant community restoration:
    - a. Seed collection and cleaning
    - b. Plant propagation
    - c. Planting
  3. Special projects include, but are not limited to:
    - a. Deer population control
    - b. Blanding turtle, snake, and wood duck monitoring
    - c. Volunteer assistance
    - d. Special 'garden areas' (e.g. Severson Dells Butterfly Garden)
    - e. Tree removals in golf course or picnic areas



# 2023 NATURAL RESOURCE ACCOMPLISHMENTS



## 2023 NATURAL RESOURCE MANAGEMENT HIGHLIGHTS

### Bell Bowl Prairie Salvage

In March of 2023, the Rockford Airport began construction on a new access road that bisected the Bell Bowl Prairie, one of Illinois' last remaining gravel prairie remnants. The initial construction work involved scraping off the vegetation and approximately the top 4 inches of soil. The Rockford Airport agreed to set aside this material, which still contained valuable roots, seeds, fungi, and soil biota, and allow the FPWC to move it offsite. We identified Cedar Cliff Forest Preserve as the best site for the material due to the soil types present, proximity to Bell Bowl Prairie, and the existing prairie restorations on site.



Twenty truckloads, or approximately 150 cubic yards, of material were hauled to Cedar Cliff. Trucks brought their cargo up the large hill and dumped it at the spot we had prepared. The goal for the material was simple: spread it over the selected area thick enough that it won't easily wash away, but not thick enough that it completely smothers the existing plants underneath. The prairie plantings at Cedar Cliff were young, so there was still plenty of bare ground for seeds and any remaining root stock to take hold. While FPWC staff were running the trucks and heavy equipment at Cedar Cliff, volunteers sifted through material for plant material at the Severson Dells nursery. They salvaged 170 pots of material, which held over 28 native species, including prairie sunflower, leadplant, wild petunia, and several species of asters.





Staff and volunteers returned several times throughout the year to remove invasive species and document the plants growing at the Bell Bowl salvage site. Wild parsnip, sweet clover, lambsquarters, and other weed species easily germinated in the disturbed soil. Managing these and others weeds will be an ongoing battle, but there is hope. Several native species that have not been observed elsewhere at Cedar Cliff also appeared in the salvage area during year one, including violet wood sorrel (pictured left), prairie sunflower, and annual sunflower. While our efforts cannot replace the loss of an ancient community, it is exciting to see some of the former inhabitants of Bell Bowl Prairie persist.

### Plants of Concern Program

In 2023, the FPWC began a new partnership with the Chicago Botanic Garden's Plants of Concern program. Plants of Concern is a community science program where trained volunteers monitor populations of rare, threatened, and endangered plants throughout the Chicago collar counties. While Winnebago County lies outside of the program's range, Plants of Concern staff offered us the opportunity to utilize their platform to collect, store, and analyze data on the rare plants found in our Preserves. Staff monitored 31 populations of 15 different species of rare plants, found in 12 preserves throughout the county. This important data will allow us to track the populations trends of these rare plants and help inform our management decisions.







The Natural Resource department forestry mowed approximately 50 acres in 2023.

FORESTRY MOWING	
Preserve	Justification
Blackhawk Springs	Remove brush from around planted oak trees
Deer Run	Clear savanna area along east boundary of preserve
Four Lakes	Remove willows and brush from prairie and dog training area
Funderburg	Remove invasive brush along 2023 prairie plantings
	Continue brush removal along creek behind horse barn
Headquarters	Remove brush along trail
Severson Dells	Remove invasive brush in western portion of the paved loop trail
Seward Bluffs	Clear brush from high quality areas and improve visibility along roadway
Sugar River Alder	Remove brush between remnant hill prairies in northeastern section of preserve



## Tree and Brush Clearing Projects:



- Natural resource and south area operations staff teamed up to clear four acres of woods inside the paved loop at Kilbuck Bluff (Upper) Forest Preserve (pictured above)
- Staff attended a chainsaw training course conducted by Chainsaw Safety Specialists at the Sugar River operations shop. Staff spent the morning indoors learning about safety, chainsaw maintenance, and felling techniques. Afterwards they put their training to work by felling large trees around the shop
- Treated resprouts of woody invasives at the locations that were forestry mowed
- Cut and treated brush throughout 50 acres of prairie at Deer Run Forest Preserve
- Removed black locust from along the entry road to Atwood Golf Course
- Removed invasive brush in several locations at Deer Run Forest Preserve to reduce habitat fragmentation between wetlands and adjacent prairie
- Cut and treated black alder and willow around fen at Kieselburg Forest Preserve
- Finished cutting and treating callery pear in prairie planting behind south area shop
- Burned brush piles at Cedar Cliff, Funderburg, Kieselburg, Kilbuck Bluffs, Kishwaukee River, and Severson Dells Forest Preserves
- Ground stumps at Funderburg River Forest Preserves
- Maintenance mowing of new prairie plantings and spot mowing of weeds in preserves as needed
- Assisted operations department with tree removals at Blackhawk Springs and Four Lakes Forest Preserves

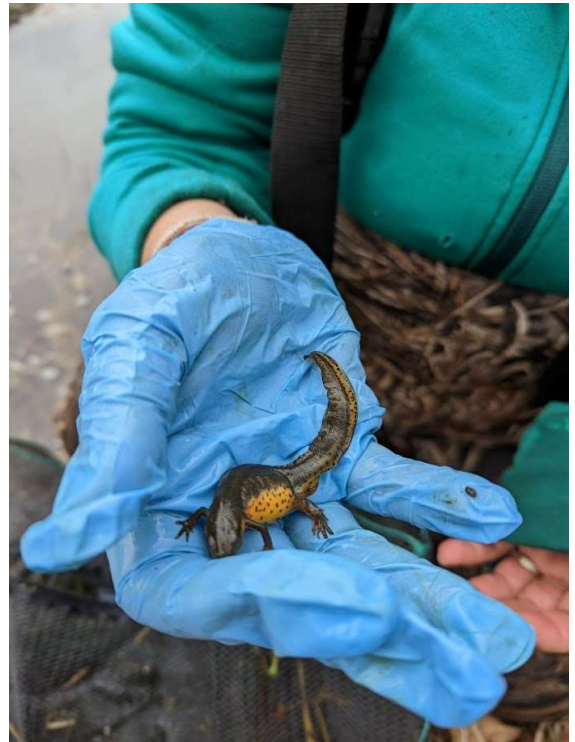
### Deer Management Program

The District continues to operate a deer management program in order to reduce the deer population in areas of the county with documented cases of chronic wasting disease (CWD). The goal of the sharpshooting program is to “reduce disease transmission rates by lowering densities in infected areas, reduce environmental contamination from infected deer, and remove sick deer from the population at a higher rate than deer are becoming newly-infected<sup>1</sup>”. We removed 60 deer from the Kishwaukee River corridor in 2023. Three of the deer sampled tested positive for CWD; two were taken from Black Hawk Springs and one was taken from Oak Ridge Forest. 10 deer were also removed from Funderburg Forest Preserve, none of which tested positive for CWD. No deer were taken from Klehm Arboretum in 2023. The 67 CWD free deer generated 2,750 pounds of meat, which was donated to the Rock River Valley Food Pantry.

<sup>1</sup>Jaques, C., D. Dufford, and P. McDonald. Illinois Chronic Wasting Disease: 2021-2022 Surveillance and Management Report. Illinois Department of Natural Resources. 20 Nov 2022

### Wildlife Management Activities:

- Staff monitored and maintained purple martin, blue bird, prothonotary warbler, and wood duck nest boxes
- Conducted vernal pool surveys for salamanders, newts, frogs, and toads. Locations at seven preserves were sampled, with seven species of herpetofauna observed
- Inventoried existing and installed new cover objects throughout several preserves to survey for snakes and other herpetofauna Natural Resource Technician Sandra Vaughn-Pottorff planned and led three moth sampling events that were open to the public. Using sheets and several different types of light to attract the moths, participants were able to document many different species of moths in the preserves.





- Collected fish, mussels, and amphibians for a display booth at the Winnebago County Fair
- The Illinois Department of Natural Resources (IDNR) sampled fish at Four Lakes Forest Preserve
- Stocked 1,600 pounds of rainbow trout at Four Lakes Forest Preserve as part of the IDNR's Catchable Trout Program
- Assisted IDNR with Canadian goose round up and banding at Four Lakes Forest Preserve, along with other IDNR sites

### **Seed Harvest:**

Department staff and volunteers dedicate much of their time during the growing season to seed harvest. This seed is used to plant new prairies and enhance diversity in restorations throughout the county. Despite the drought conditions this year, we managed to harvest 1,440 pounds of finished seed from 225 species! Approximately 900 pounds of finished seed was collected by hand, while 460 pounds was collected using our tractor mounted seed harvester. While it is difficult to estimate the value of the seed collected, it is estimated to be worth at least \$130,000.

### **Seeding Projects:**

A majority of the seed collected in 2022 was used to plant 70 acres of new prairie at Funderburg Forest Preserve in the spring of 2023. The one acre horse arena located at Olson Forest Preserve was also planted with a dry prairie mix. The seeds collected from woodland and savanna species throughout the year were used to enhance areas within the preserves that have recently had invasive brush removed.

### **Greenhouse:**

This year we planted 70 starter flats of seed from over thirty species. Due to changes in the growing media we use, we had unprecedented germination rates. As the plants outgrew the starter flats, they were either planted into larger containers or, if there was an excess of seedlings, directly out into the preserves. By fall, over 3,000 potted plants were planted in several preserves throughout the county. Species include wild petunia, swamp milkweed, rough blazing star, New Jersey tea, and cream indigo. Additionally, plants from our wetland nursery stock were divided and planted at Kishwaukee River, Pecatonica Wetlands, and Sugar River Forest Preserves.

### Tree Plantings:

- Planted 1,880 bareroot trees at Atwood, Crooked River, Ferguson, Funderburg, Headquarters, Kishwaukee River, Oak Ridge, Pecatonica River, Pecatonica Wetlands, and Seward Forest Preserves. Species planted include white oak, bur oak, red oak, swamp white oak, shagbark hickory, sycamore, silky dogwood, and elderberry.
- Planted 24 trees from Severson Dells nursery at Four Lakes, Pecatonica River, Pecatonica Wetlands, and Severson Dells Forest Preserves
- Transplanted trees from the Macktown tree nursery to Atwood Golf Course and Hononegah Forest Preserve



### Preserve Maintenance Projects

- Installed a new section of trail at Funderburg Forest Preserve to avoid a low, consistently wet spot
- Removed old shelter house at Severson Dells Forest Preserve
- Inspected and cleaned out water control structures and culverts throughout the Preserves
- Performed maintenance on water control structure at Pecatonica Wetlands Forest Preserve
- Removed fence at Funderburg Forest Preserve
- Installed new gates at the Pecatonica maintenance shop
- Augered holes at Klehm Arboretum for the planting of new trees in support of their Urban and Community Forestry grant
- Installed terraces and gravel diversions along an erosion prone trail at Funderburg Forest Preserve
- Removed old snow mobile bridge across ditch along Pecatonica Road at Pecatonica Wetlands Forest Preserve
- Restored 700' of shoreline along pond at Four Lakes Forest Preserve
- Removed buried trash pile near former dairy farm at Funderburg Forest Preserve

### Outreach and Collaboration

- Hosted a hike as part of Illinois Nature Preserves Weekend to celebrate the 60th anniversary of the formation of the Illinois Nature Preserves Commission
- Staff led guided hikes at Cedar Cliff, Colored Sands, Deer Run, Hononegah, Kieselburg, and Oak Ridge Forest Preserves
- Hosted the Hooked on Fun kid's fishing derby at Four Lakes Forest Preserve, which was attended by more than 150 people
- Joined Natural Land Institute and Boone County Conservation District for interagency seed harvest workdays as part of the Northern Illinois Native Seed Network
- Resource technician Eric Bednar led a field trip for a science class from Hononegah High School at Sugar River Forest Preserve where students learned about ecological restoration and wildlife monitoring
- Participated in the District's career and volunteer fair

2023 PRESCRIBED BURN SUMMARY					
LOCATION	PLANNED ACRES	SPRING ACRES	DATES	FALL ACRES	DATES
ATWOOD HOMESTEAD	53	8	3/30		
BLACKHAWK SPRINGS	398				
CEDAR CLIFF	36				
CLAYTON ANDREWS	88				
COLORADO SANDS	126	34	3/21		
COUNTY LINE	119				
CROOKED RIVER	208				
DEER RUN	237	80	3/20		
ESPENSCHIED MEMORIAL	20				
FERGUSON	278				
FOUR LAKES	126			95	11/17
FULLER MEMORIAL	96				
FUNDERBURG	153				
GROVE CREEK	71				
HARTLEY MEMORIAL	40				
HEADQUARTERS	7.7		4/3		
HONONEGAH	65				
INDIAN HILL	0				
J. NORMAN JENSEN	9				
KIESELBURG	55				
KILBUCK BLUFFS	78			33	11/13
KISHWAUKEE GORGE	96				
KISHWAUKEE RIVER	140				
KLEHM ARBORETUM	7				
LAONA HEIGHTS	5				
LEDGES	8				
MACKTOWN	46	8	3/30		
MILLRACE ISLE	0				
OAK RIDGE	217	217	3/20		
PECATONICA RIVER	137				
PECATONICA WETLANDS	202	275	3/24, 4/10		
ROCKFORD ROTARY	84			86	11/14
ROLAND OLSON	60				



SEVERSON DELLS	94				
SEWARD BLUFFS	185	162	3/28	181	11/15,11/16
STONE BRIDGE	11				
SUGAR RIVER ALDER	245	52	3/21		
SUGAR RIVER	165				
<b>TOTAL</b>	3,958	836	10	<b>395</b>	5
# of Burn Days	12				
# of Burns	15				
Total Acres Burned 2023	1,231				

## 2023 SEED HARVEST SUMMARY

BOTANICAL NAME	COMMON NAME	Total Lbs	Value
<i>Acorus calamus</i>	Sweet Flag	4.1	\$ 612.19
<i>Actaea pachypoda</i>	White Baneberry	0.1	\$ -
<i>Actaea rubra</i>	Red Baneberry	0.3	\$ -
<i>Agalinis tenuifolia</i>	Slender False Foxglove	0.1	\$ -
<i>Allium cernuum</i>	Nodding Wild Onion	0.1	\$ -
<i>Allium stellatum</i>	Prairie Wild Onion	0.0	\$ -
<i>Alnus incana</i>	Speckled Alder	0.1	\$ -
<i>Amorpha canescens</i>	Lead Plant	76.0	\$ 22,800.00
<i>Andropogon gerardii</i>	Big Bluestem Grass	37.5	\$ 562.50
<i>Anemone canadensis</i>	Canada Anemone	1.8	\$ -
<i>Anemone cylindrica</i>	Prairie Thimbleweed	2.5	\$ -
<i>Anemone patens</i>	Pasque Flower	0.0	\$ -
<i>Anemone virginiana</i>	Tall Thimbleweed	8.5	\$ -
<i>Angelica atropurpurea</i>	Angelica	8.0	\$ 600.00
<i>Antennaria neglecta</i>	Pussytoes	0.0	\$ -
<i>Aquilegia canadensis</i>	Wild Columbine	0.0	\$ 2.34
<i>Arisaema dracontium</i>	Green Dragon	0.0	\$ -
<i>Arisaema triphyllum</i>	Jack-in-the-Pulpit	0.0	\$ -
<i>Aristida purpurea</i>	Three-Awn Grass	0.1	\$ -
<i>Arnoglossum atriplicifolium</i>	Pale Indian Plantain	0.0	\$ 0.94
<i>Artemisia campestris</i>	Tall / Field Wormwood	1.0	\$ -
<i>Artemisia dracunculus</i>	Dragon Wormwood	0.1	\$ -
<i>Artemisia ludoviciana</i>	Silver Wormwood	0.0	\$ -
<i>Asarum canadense</i>	Wild Ginger	0.0	\$ -
<i>Asclepias amplexicaulis</i>	Sand Milkweed	0.0	\$ -
<i>Asclepias exaltata</i>	Poke Milkweed	0.0	\$ -
<i>Asclepias incarnata</i>	Swamp Milkweed	0.4	\$ 53.63
<i>Asclepias syriaca</i>	Common Milkweed	1.4	\$ 126.00
<i>Asclepias tuberosa</i>	Butterfly Weed	0.6	\$ 193.50
<i>Asclepias verticillata</i>	Whorled Milkweed	11.0	\$ -
<i>Aureolaria grandiflora</i>	Large-Flowered False Foxglove	1.5	\$ -
<i>Aureolaria pedicularia</i>	Fern-Leaf False Foxglove	3.0	\$ -
<i>Baptisia alba</i>	White Wild Indigo	78.0	\$ 14,040.00
<i>Baptisia leucophaea</i>	Cream Wild Indigo	2.0	\$ -
<i>Besseyia bullii</i>	Kittentails	0.0	\$ -
<i>Blephilia ciliata</i>	Downy Wood Mint	0.0	\$ -
<i>Blephilia hirsuta</i>	Hairy Wood Mint	0.1	\$ -
<i>Bouteloua curtipendula</i>	Sideoats Grama	49.0	\$ 1,274.00
<i>Brickellia eupatorioides</i>	False Boneset	8.0	\$ 3,600.00
<i>Bromus kalmii</i>	Prairie Brome	0.5	\$ 37.50
<i>Bromus latiglumis</i>	Ear-Leaved Brome	0.8	\$ -
<i>Calamagrostis canadensis</i>	Bluejoint Grass	4.0	\$ -
<i>Caltha palustris</i>	Marsh Marigold	0.3	\$ -

<i>Campanula americana</i>	Tall Bellflower	0.6	\$ 285.47
<i>Carex atherodes</i>	Slough Sedge	0.0	\$ -
<i>Carex bicknellii</i>	Bicknell's Sedge	0.0	\$ -
<i>Carex brevior</i>	Plains Oval Sedge	0.0	\$ -
<i>Carex comosa</i>	Bristly Sedge	0.0	\$ -
<i>Carex cristatella</i>	Crested Sedge	0.0	\$ -
<i>Carex davisii</i>	Davis' Sedge	0.0	\$ -
<i>Carex grayi</i>	Gray's Sedge	0.1	\$ -
<i>Carex grisea</i>	Wood Gray Sedge	0.0	\$ -
<i>Carex hystericina</i>	Porcupine Sedge	0.0	\$ 0.94
<i>Carex lacustris</i>	Lake Sedge	0.0	\$ -
<i>Carex lupulina</i>	Common Hop Sedge	0.0	\$ 1.88
<i>Carex molesta</i>	Troublesome Sedge	0.0	\$ -
<i>Carex pellita</i>	Woolly Sedge	0.0	\$ -
<i>Carex pennsylvanica</i>	Pennsylvania Sedge	0.0	\$ -
<i>Carex radiata</i>	Eastern Star Sedge	0.1	\$ -
<i>Carex rosea</i>	Curly Wood Sedge	0.0	\$ -
<i>Carex sprengelii</i>	Long-Beaked Sedge	0.9	\$ 103.13
<i>Carex stipata</i>	Awl-Fruited Sedge	0.0	\$ -
<i>Carex stricta</i>	Tussock Sedge	0.2	\$ -
<i>Carex trichocarpa</i>	Hairy-Fruited Sedge	0.0	\$ -
<i>Carex vesicaria</i>	Blister Sedge	0.0	\$ -
<i>Carex vulpinoidea</i>	Brown Fox Sedge	0.8	\$ 90.00
<i>Caulophyllum thalictroides</i>	Blue Cohosh	4.6	\$ -
<i>Ceanothus americanus</i>	New Jersey Tea	1.6	\$ -
<i>Cephalanthus occidentalis</i>	Buttonbush	1.3	\$ 150.00
<i>Chamaecrista fasciculata</i>	Partridge Pea	1.0	\$ 18.00
<i>Chelone glabra</i>	White Turtlehead	0.4	\$ -
<i>Cinna arundinacea</i>	Sweet Woodreed	0.3	\$ -
<i>Cirsium discolor</i>	Field Thistle	0.8	\$ 450.00
<i>Claytonia virginica</i>	Virginia Spring Beauty	0.1	\$ -
<i>Clematis virginiana</i>	Virgin's Bower	0.5	\$ -
<i>Coreopsis lanceolata</i>	Lanceleaf Coreopsis	0.0	\$ 0.28
<i>Coreopsis palmata</i>	Prairie Coreopsis	1.6	\$ 234.38
<i>Coreopsis tripteris</i>	Tall Coreopsis	1.7	\$ 630.47
<i>Corylus americana</i>	American Hazelnut	12.0	\$ -
<i>Crocanthemum canadense</i>	Canada Frostweed	0.1	\$ -
<i>Dalea candida</i>	White Prairie Clover	20.0	\$ 700.00
<i>Dalea purpurea</i>	Purple Prairie Clover	29.5	\$ 531.00
<i>Dentaria laciniata</i>	Toothwort	0.0	\$ -
<i>Desmodium glutinosum</i>	Pointed-Leaf Tick Trefoil	0.1	\$ -
<i>Desmodium illinoense</i>	Illinois Tick Trefoil	0.6	\$ 126.56
<i>Dicentra cucullaria</i>	Dutchman's Breeches	0.0	\$ -
<i>Dodecatheon meadia</i>	Shooting Star	2.7	\$ -
<i>Echinacea pallida</i>	Pale Purple Coneflower	8.0	\$ 720.00
<i>Elymus canadensis</i>	Canada Wildrye	19.0	\$ 342.00

<i>Elymus hystrix</i>	Bottlebrush Grass	25.0	\$ 3,000.00
<i>Erigeron pulchellus</i>	Robin's Plantain	0.2	\$ -
<i>Eriophorum angustifolium</i>	Cotton Top Sedge	0.0	\$ -
<i>Eryngium yuccifolium</i>	Rattlesnake Master	86.5	\$ 7,785.00
<i>Eupatorium altissimum</i>	Tall Boneset	0.8	\$ 240.00
<i>Eupatorium perfoliatum</i>	Common Boneset	0.2	\$ 98.44
<i>Eupatorium serotinum</i>	Late Boneset	2.5	\$ -
<i>Euphorbia corollata</i>	Flowering Spurge	4.5	\$ -
<i>Euthamia graminifolia</i>	Grass-Leaved Goldenrod	10.8	\$ 972.00
<i>Eutrochium maculatum</i>	Spotted Joe Pye Weed	8.0	\$ 3,000.00
<i>Eutrochium purpureum</i>	Sweet Joe Pye Weed	3.6	\$ -
<i>Gaura biennis</i>	Biennial Beeblossom	0.0	\$ -
<i>Gentiana andrewsii</i>	Bottle Gentian	1.2	\$ -
<i>Gentiana flavida</i>	Cream Gentian	4.0	\$ 900.00
<i>Gentianella quinquefolia</i>	Stiff Gentian	0.0	\$ -
<i>Geranium maculatum</i>	Wild Geranium	0.2	\$ -
<i>Geum triflorum</i>	Prairie Smoke	0.2	\$ -
<i>Glyceria striata</i>	Fowl Manna Grass	2.2	\$ -
<i>Hasteola suaveolens</i>	Sweet Indian Plantain	5.4	\$ 810.00
<i>Helianthemum bicknellii</i>	Hoary Frostweed	0.0	\$ -
<i>Helianthus divaricatus</i>	Woodland Sunflower	0.0	\$ -
<i>Helianthus occidentalis</i>	Western Sunflower	0.0	\$ -
<i>Helianthus tuberosus</i>	Jerusalem Artichoke	0.6	\$ -
<i>Heliopsis helianthoides</i>	False Sunflower	0.0	\$ -
<i>Heracleum maximum</i>	Cow Parsnip	1.5	\$ 90.00
<i>Hesperostipa spartea</i>	Porcupine Grass	0.0	\$ -
<i>Heuchera richardsonii</i>	Prairie Alumroot	0.0	\$ -
<i>Hieracium longipilum</i>	Hairy Hawkweed	0.8	\$ -
<i>Hypoxis hirsuta</i>	Yellow Star Grass	0.0	\$ -
<i>Ilex verticillata</i>	Winterberry	0.6	\$ -
<i>Ionactis linariifolius</i>	Flax-Leaved Aster	0.1	\$ -
<i>Iris virginica</i>	Southern Blue Flag Iris	0.0	\$ -
<i>Koeleria macrantha</i>	June Grass	8.5	\$ 212.50
<i>Lactuca biennis</i>	Blue Wild Lettuce	0.0	\$ -
<i>Lespedeza capitata</i>	Round-Headed Bush Clover	6.0	\$ 900.00
<i>Lespedeza violacea</i>	Violet Bush Clover	0.0	\$ -
<i>Liatris aspera</i>	Rough Blazing Star	0.1	\$ -
<i>Liatris cylindrica</i>	Cylindric Blazing Star	0.1	\$ -
<i>Liatris pycnostachya</i>	Prairie Blazing Star	3.0	\$ -
<i>Lilium michiganense</i>	Michigan Lily	0.1	\$ -
<i>Lithospermum canescens</i>	Hoary Puccoon	1.5	\$ -
<i>Lithospermum carolinense</i>	Sand / Carolina Puccoon	1.0	\$ -
<i>Lithospermum incisum</i>	Fringed Puccoon	0.6	\$ -
<i>Lithospermum latifolium</i>	Woodland Puccoon	0.1	\$ -
<i>Lobelia cardinalis</i>	Cardinal Flower	0.2	\$ 140.63
<i>Lobelia inflata</i>	Indian Tobacco	0.0	\$ -



<i>Lobelia siphilitica</i>	Great Blue Lobelia	1.5	\$ 675.00
<i>Lupinus perennis</i>	Wild Lupine	12.5	\$ 5,625.00
<i>Lysimachia quadriflora</i>	Fourflower Yellow Loosestrife	0.0	\$ -
<i>Maianthemum racemosum</i>	False Solomon's Seal	0.4	\$ -
<i>Maianthemum stellata</i>	Starry False Solomon's Seal	1.0	\$ -
<i>Mertensia virginica</i>	Virginia Bluebells	0.0	\$ -
<i>Mimulus ringens</i>	Monkey Flower	0.5	\$ 112.50
<i>Monarda fistulosa</i>	Wild Bergamot	0.0	\$ -
<i>Monarda punctata</i>	Spotted Bee Balm	1.1	\$ -
<i>Napaea dioica</i>	Glade Mallow	8.6	\$ -
<i>Oenothera biennis</i>	Common Evening-Primrose	0.3	\$ 30.38
<i>Onoclea sensibilis</i>	Sensitive Fern	0.2	\$ -
<i>Onosmodium bejeriense</i>	False Gromwell	3.0	\$ -
<i>Opuntia humifusa</i>	Prickly Pear Cactus	0.0	\$ -
<i>Osmorhiza longistylis</i>	Aniseroot	0.2	\$ -
<i>Parthenium integrifolium</i>	Wild Quinine	1.5	\$ -
<i>Pedicularis canadensis</i>	Wood Betony	0.0	\$ -
<i>Pedicularis lanceolata</i>	Swamp Betony	1.4	\$ -
<i>Penstemon digitalis</i>	Foxglove Beardtongue	21.5	\$ 1,935.00
<i>Penstemon pallidus</i>	Pale Penstemon	0.9	\$ -
<i>Phlox divaricata</i>	Wild Blue Phlox	0.2	\$ -
<i>Physostegia virginiana</i>	Obedient Plant	0.6	\$ 234.38
<i>Polemonium reptans</i>	Jacob's Ladder	0.0	\$ -
<i>Polygonatum biflorum</i>	Smooth Solomon's Seal	3.8	\$ -
<i>Drymocallis arguta</i>	Prairie Cinquefoil	9.0	\$ -
<i>Prunus americana</i>	Wild Plum	0.0	\$ -
<i>Pseudognaphalium obtusifolium</i>	Sweet Everlasting	0.1	\$ -
<i>Psoraleidium tenuiflorum</i>	Scurfy Pea	0.4	\$ -
<i>Pycnanthemum virginianum</i>	Virginia Mountain Mint	2.4	\$ -
<i>Ratibida pinnata</i>	Yellow Coneflower	14.0	\$ 1,050.00
<i>Rhus aromatica</i>	Fragrant Sumac	0.0	\$ -
<i>Rosa carolina</i>	Carolina Rose	3.8	\$ -
<i>Rudbeckia hirta</i>	Black-Eyed Susan	27.0	\$ 675.00
<i>Rudbeckia subtomentosa</i>	Sweet Black-Eyed Susan	0.5	\$ 70.31
<i>Rudbeckia triloba</i>	Brown-Eyed Susan	2.5	\$ 225.00
<i>Sanguinaria canadensis</i>	Bloodroot	0.4	\$ -
<i>Schizachyrium scoparium</i>	Little Bluestem	413.0	\$ 6,608.00
<i>Scirpus atrovirens</i>	Dark Green Bulrush	0.5	\$ 27.38
<i>Scirpus cyperinus</i>	Woolgrass	10.0	\$ 1,200.00
<i>Scirpus validus</i>	Softstem Bulrush	1.0	\$ 120.00
<i>Scrophularia marilandica</i>	Late Figwort	1.2	\$ -
<i>Scutellaria ovata</i>	Heart-Leaved Skullcap	0.0	\$ -
<i>Senna hebecarpa</i>	Wild Senna	12.0	\$ -
<i>Senna marilandica</i>	Maryland Senna	0.3	\$ 21.33
<i>Silene regia</i>	Royal Catchfly	1.1	\$ -
<i>Silene stellata</i>	Starry Campion	0.3	\$ -

<i>Silphium integrifolium</i>	Rosinweed	8.3	\$ 2,475.00
<i>Silphium laciniatum</i>	Compass Plant	16.0	\$ 1,920.00
<i>Silphium perfoliatum</i>	Cup Plant	7.0	\$ 1,575.00
<i>Silphium terebinthinaceum</i>	Prairie Dock	10.0	\$ -
<i>Sisyrinchium campestre</i>	Prairie Blue-Eyed Grass	0.2	\$ -
<i>Sium suave</i>	Water Parsnip	0.0	\$ -
<i>Solidago nemoralis</i>	Old Field Goldenrod	3.0	\$ 900.00
<i>Oligoneuron riddellii</i>	Riddell's Goldenrod	0.0	\$ 14.06
<i>Oligoneuron rigidum</i>	Stiff Goldenrod	21.8	\$ 3,270.00
<i>Solidago speciosa</i>	Showy Goldenrod	8.7	\$ 3,262.50
<i>Solidago ulmifolia</i>	Elm-Leaved Goldenrod	0.1	\$ 37.50
<i>Sorghastrum nutans</i>	Indian Grass	0.0	\$ -
<i>Sparganium eurycarpum</i>	Great Bur-Reed	1.2	\$ 72.00
<i>Spartina pectinata</i>	Prairie Cordgrass	2.3	\$ 277.50
<i>Sporobolus compositus</i>	Rough Dropseed	0.0	\$ 0.16
<i>Sporobolus heterolepis</i>	Prairie Dropseed	13.7	\$ 3,079.69
<i>Staphylea trifolia</i>	American Bladdernut	0.6	\$ -
<i>Symphyotrichum cordifolium</i>	Blue Wood Aster	0.0	\$ -
<i>Symphyotrichum ericoides</i>	Heath Aster	1.0	\$ 120.00
<i>Symphyotrichum laeve</i>	Smooth Blue Aster	0.1	\$ 11.25
<i>Symphyotrichum lanceolatum</i>	White Panicked Aster	2.0	\$ -
<i>Symphyotrichum lateriflorum</i>	Calico Aster	0.0	\$ 3.75
<i>Symphyotrichum novae-angliae</i>	New England Aster	8.9	\$ 3,337.50
<i>Symphyotrichum oblongifolium</i>	Aromatic Aster	0.1	\$ -
<i>Symphyotrichum oolentangiense</i>	Sky Blue Aster	8.0	\$ 4,800.00
<i>Symphyotrichum sericeum</i>	Silky Aster	0.1	\$ -
<i>Symphyotrichum urophyllum</i>	White Arrow-Leaved Aster	2.0	\$ -
<i>Tephrosia virginiana</i>	Goat's Rue	15.0	\$ 3,000.00
<i>Teucrium canadense</i>	Germander	0.3	\$ 130.08
<i>Thalictrum dasycarpum</i>	Tall / Purple Meadow-Rue	2.0	\$ 300.00
<i>Thaspium trifoliatum</i>	Purple Meadow Parsnip	0.1	\$ 53.44
<i>Tradescantia ohiensis</i>	Spiderwort	5.0	\$ 1,500.00
<i>Trillium recurvatum</i>	Prairie Trillium	0.3	\$ -
<i>Triosteum perfoliatum</i>	Wild Coffee	13.0	\$ 780.00
<i>Uvularia grandiflora</i>	Large-Flowered Bellwort	0.1	\$ -
<i>Valeriana ciliata</i>	Edible Valerian	0.6	\$ -
<i>Verbena hastata</i>	Blue Vervain	2.1	\$ 189.90
<i>Verbena stricta</i>	Hoary Vervain	7.6	\$ 912.00
<i>Verbesina alternifolia</i>	Wingstem	0.6	\$ -
<i>Vernonia fasciculata</i>	Ironweed	3.8	\$ -
<i>Veronicastrum virginicum</i>	Culver's Root	10.1	\$ 3,015.00
<i>Zizia aptera</i>	Heart-Leaf Golden Alexander	1.0	\$ 612.00
<i>Zizia aurea</i>	Divided-Leaf Golden Alexander	15.0	\$ 1,350.00
<b>TOTALS</b>	<b>Species 225</b>	<b>1339.8</b>	<b>\$ 122,042.84</b>

# 2024 NATURAL RESOURCE OBJECTIVES



## GENERAL TIMELINE FOR MANAGEMENT ACTIVITIES

ACTIVITY	J	F	M	A	M	J	J	A	S	O	N	D
Deer Management Program												
Forestry Mowing												
Hand Clearing												
Nest Box Monitoring												
Prairie Seeding												
Basal Bark Applications												
Salamander Surveys												
Prescribed Fire												
Coverboard Surveys												
Turtle Surveys												
Reed Canary Grass Treatment												
Early PIS: Poison Hemlock, Teasel												
Seed Harvest												
Mowing Parsnip, Clover, Thistle												
Mid PIS: Teasel, Bird'sfoot Trefoil, Crown Vetch, Japanese Knotweed												
Late PIS: Silky Bushclover, Phragmites												



## Priority Invasive Species

The invasive plant species listed below represent some of Winnebago County's newest and most aggressive invaders, along with the preserves where they can be found. A majority of these infestations are still small and just beginning to establish. These populations will be monitored and treated by Natural Resource Department staff several times during the growing season. Larger, well established populations will be addressed as staff time and chemical inventory allows.

### **Bird's-foot Trefoil** **(*Lotus corniculatus*)**

Deer Run  
Ferguson  
Four Lakes  
Headquarters  
Grove Creek  
Jensen  
Kieselburg  
Macktown  
Oak Ridge  
Seward  
Stone Bridge

Kishwaukee River East  
Kishwaukee River West  
Olson  
Pecatonica River  
Pecatonica Wetlands  
Seward  
Stone Bridge  
Sugar River

Headquarters  
Indian Hill  
Killbuck  
Kishwaukee Gorge  
Kishwaukee River East  
Ledges  
Macktown  
Oak Ridge  
Olson  
Pecatonica River  
Seward  
Stone Bridge

### **Bouncing Bet - Trial** **(*Saponaria officinalis*)**

Deer Run  
Jensen

### **Black Locust** **(*Robinia pseudoacacia*)**

Atwood  
Colored Sands  
Ferguson  
Fuller  
Funderburg  
Grove Creek  
Headquarters  
Indian Hill  
Jensen  
Kieselburg

### **Crown Vetch** **(*Securigera varia*)**

Blackhawk Springs  
Cedar Cliff  
County Line  
Deer Run  
Ferguson  
Four Lakes  
Fuller  
Funderburg  
Grove Creek  
Kieselburg

### **Japanese Knotweed** **(*Fallopia japonica*)**

Ferguson  
Severson Dells

### **Oriental Bittersweet** **(*Celastrus orbiculatus*)**

Funderburg  
Four Lakes  
Indian Hill  
Severson Dells  
Stone Bridge

**Phragmites****(Phragmites australis)**

Clayton Andrews  
County Line  
Deer Run  
Four Lakes  
Grove Creek  
Headquarters  
Stone Bridge

**Poison Hemlock****(Conium maculatum)**

Atwood  
Blackhawk Springs  
Deer Run  
Four Lakes  
Fuller  
Funderburg  
Headquarters  
Hononegah  
Mill Race

**Purple Loosestrife****(Lythrum salicaria)**

Atwood  
County Line  
Headquarters  
Jensen  
Ledges  
Mill Race

**Silky Bush Clover****(Lespedeza cuneata)**

Ferguson  
Kishwaukee River East  
Kishwaukee River West

**Teasel (Dipsacus spp.)**

Blackhawk Springs  
Cedar Cliff  
County Line  
Deer Run  
Four Lakes  
Grove Creek  
Indian Hill  
Kieselburg  
Mill Race  
Oak Ridge  
Pecatonica River  
Pecatonica Wetlands  
Seward  
Sugar River

2024 MANAGEMENT ACTIVITIES	Resource	Area Manager
Atwood Homestead		
Replace trees as needed with nursery stock	X	
Forestry mow and bushhog prairie restorations on golf course	X	
Mow back roadsides once a year	X	
PIS: black locust, poison hemlock, purple loosestrife	X	
Blackhawk Springs		
Continue removing brush and thinning canopy in high quality areas of 'big woods'	X	
Remove Ash around Playground as needed		X
Clear brush between parking lot and bike path	X	
Treat woody invasives in restorations as needed	X	
PIS: crown vetch, poison hemlock, teasel	X	
Cedar Cliff		
Hand remove invasives in Bell Bowl Prairie salvage area	X	
Treat invasives and reed canary grass along creek	X	
PIS: crown vetch, teasel	X	
Colored Sands		
Forestry mow sumac southwest of hawk banding station	X	
Handcut brush out of prairie remnant in Nature Preserve	X	
Increase burn frequency and size of areas	X	
PIS: black locust	X	
County Line		
PIS: crown vetch, phragmites, purple loosestrife, teasel	X	
Crooked River		
Increase burn frequency to reduce invasive trees	X	
Monitor for PIS	X	
Deer Run		
Remove understory brush and select canopy trees along wetland areas to decrease habitat fragmentation	X	
Mow and treat willows in "L" field	X	
Finish treating woody invasives in prairie north of entrance drive	X	
Apply grass specific herbicide to brome grass in savanna restoration	X	
Remove brush and treat reed canary grass in oak grove at trail marker 12	X	
PIS: bird's-foot trefoil, bouncing bet, crown vetch, phragmites, poison hemlock, teasel	X	

Espenscheid Memorial		
Forestry mow under large oaks	X	
Monitor for PIS	X	
Ferguson		
Repair levee weak points and breaches as needed	X	
Add wetland seed and plugs as needed	X	
Handcut brush out of prairie remnant	X	
Control willow growth and expansion along trails	X	
PIS: bird's-foot trefoil, black locust, crown vetch, japanese knotweed, silky bushclover	X	
Four Lakes		
Treat invasive woody species in prairie restoration	X	
Continue with shoreline stabilization	X	
Treat aquatic weeds and algae as needed	X	
Control willows in wetland area north of ponds	X	
PIS: bird's-foot trefoil, crown vetch, oriental bittersweet, phragmites, poison hemlock, teasel	X	
Funderburg		
Oversee forestry mowing and resprout contact	X	
Continue with fence removals	X	
Plant 69 acres of prairie in former crop fields	X	
Thin tree line east of long lane	X	
Forestry mow field edges and woodland areas as time permits	X	
Remove trash from ravine west of 2024 planting area	X	
Cut and pile downed trees in contract cleared area	X	
Continue planting trees in reforestation areas	X	
Continue removing brush on slopes overlooking skunk cabbage patches	X	
PIS: black locust, crown vetch, oriental bittersweet, poison hemlock	X	
Fuller Memorial		
PIS: black locust, crown vetch, poison hemlock	X	
Grove Creek		
Monitor encroachments by neighbors	X	
PIS: bird's-foot trefoil, black locust, crown vetch, phragmites, teasel	X	
Hartley Memorial		
Monitor for PIS	X	
Hinchliff		
Monitor for PIS	X	
Headquarters		
Continue invasive woody removals along bike path and in front prairie	X	

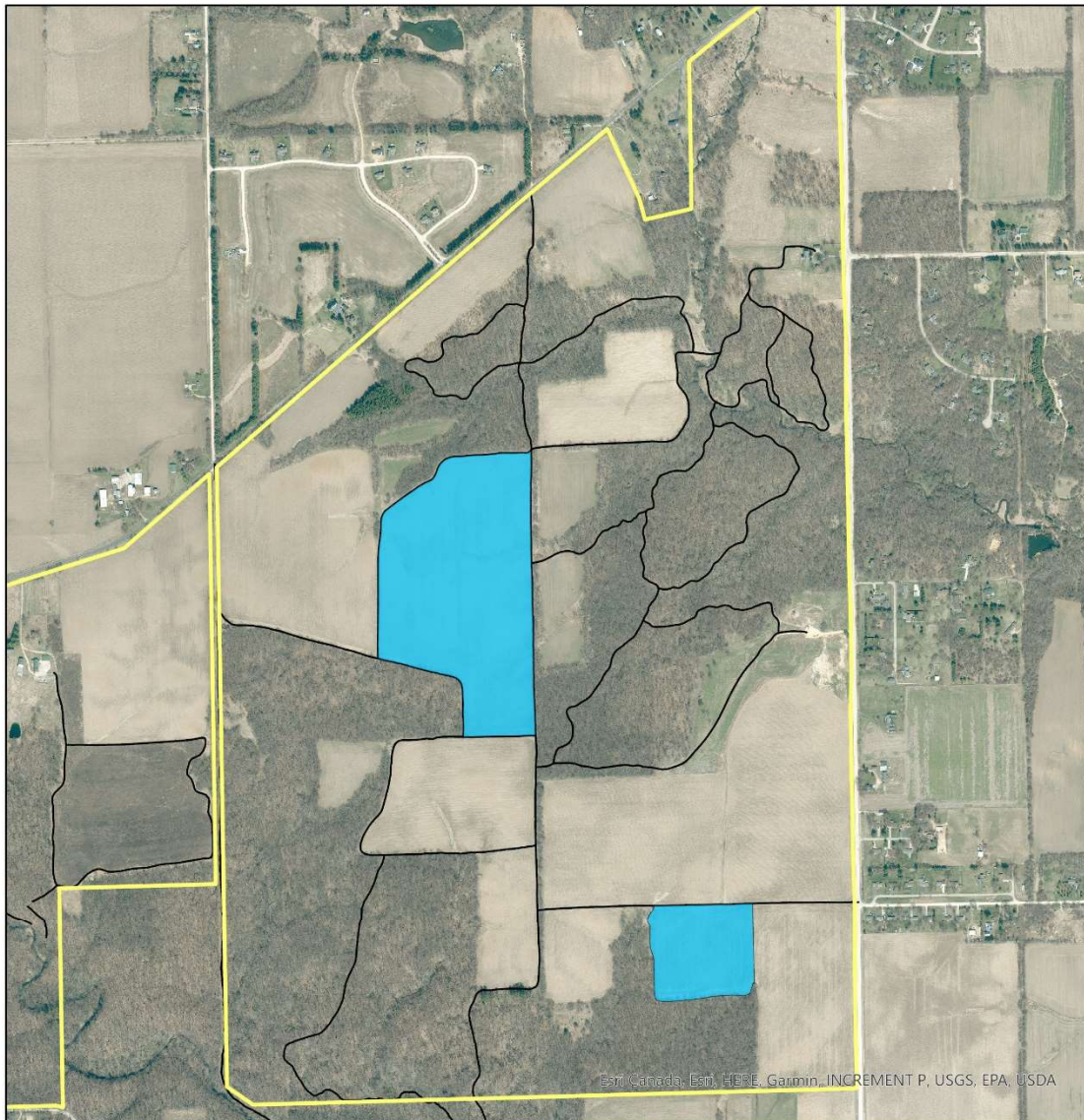
Remove two cedars at preserve entrance and aspens around building as needed	X	
Maintain landscape beds	X	
PIS: bird'sfoot trefoil, crown vetch, phragmites	X	
Hononegah		
Add seed and plugs to no mow areas	X	
Mow set-aside areas along lower loop once a year	X	
Add nursery trees as needed	X	
PIS: poison hemlock	X	
Indian Hill		
PIS: black locust, crown vetch, oriental bittersweet, teasel	X	
J. Norman Jensen		
Enhance habitat for federally listed <i>Artemesia dracunculus</i>	X	
PIS: bird'sfoot trefoil, black locust, bouncing bet, purple loosestrife	X	
Kieselburg		
Continue treating black alder and willows in high quality areas	X	
Mow restorations as needed	X	
Remove dead pines along Swanson Rd. as needed	X	
PIS: bird's-foot trefoil, black locust, crown vetch, teasel	X	
Kilbuck Bluffs		
Install burn break around inholding on South Bend Rd.	X	
Treat resprouts in area cleared over winter	X	
PIS: crown vetch	X	
Kishwaukee Gorge		
Continue treating autumn olive in prairie restoration	X	
Conduct plant survey	X	
Basal bark buckthorn and sugar maples between path and bluff	X	
Forestry mow from south edge of prairie loop to bluff	X	
Evaluate ways to deter off trail use	X	
Collect and submit voucher specimens for <i>Eupatorium sessilifolium</i>	X	
PIS: crown vetch	X	
Kishwaukee East		
Mow south addition once a year	X	
Continue treating callery pear in restoration behind south area shop as needed	X	
Treat buckthorn at south end of drive loop	X	
PIS: black locust, crown vetch, silky bush clover	X	
Kishwaukee West		
Continue to treat resprouts around Lithuania Club prairie remnants	X	
Continue forestry mowing in Lithuania Club woods	X	
PIS: black locust, silky bush clover	X	

Laona Heights		
Fall mow restoration areas	X	
Monitor for PIS	X	
Ledges		
Assist golf staff with cleaning out ditch at hole 11	X	
Mow restorations in the fall and burn as needed	X	
PIS: crown vetch, purple loosestrife	X	
Macktown		
Add seed to enhance savanna area near visitor's center	X	
Forestry mow and bushhog restorations on golf course	X	
PIS: bird's-foot trefoil, crown vetch	X	
Millrace Isle		
PIS: poison hemlock, purple loosestrife, teasel	X	
Oak Ridge		
Treat woody invasives in prairie restorations	X	
Treat reed canary grass and willows in waterway	X	
PIS: teasel, bird's-foot trefoil	X	
Pecatonica River		
Treat reed canary grass with grass specific herbicide in POC locations	X	
PIS: black locust, crown vetch, poison hemlock, teasel	X	
Pecatonica Wetlands		
Maintain dikes as needed	X	
Treat reed canary grass with grass specific herbicide in upland locations along Blair Rd.	X	
Continue to monitor water levels and control structures	X	
PIS: black locust, poison hemlock, teasel	X	
Rockford Rotary		
Hand clear and treat brush around twinleaf	X	
Hand clear and treat brush around yellow star grass	X	
Evaluate ways to exclude ATVs	X	
Monitor for PIS	X	
Roland Olson		
Cut brush from entrance prairie plantings and add seed	X	
Bush hog upper island of pines once a year - dormant season		X
Mow old pine area by shelterhouse - dormant season	X	
PIS: black locust, crown vetch	X	
Severson Dells		
Install shade tarp for greenhouse plants	X	
Forestry mow brush in Nature Preserve; treat stumps, resprouts, day lilies	X	



PIS: Japanese knotweed, oriental bittersweet	X	
Seward Bluffs		
Mow set aside areas at least once a year to 12" ht	X	X
Cut and treat brush in prairie around quarried area	X	
Cut and treat brush in prairie remnants	X	
Treat smooth brome northeast of equestrian area in savanna area with grass specific	X	
Continue treating reed canary grass in the sloughs along Grove Creek	X	
PIS: bird's-foot trefoil, black locust, crown vetch, poison hemlock, teasel	X	
Stone Bridge		
Forestry mow entry lane, old waterway, and oak savanna	X	
Collect seed to plant old waterway	X	
Evaluate phragmites patches for treatment options	X	
PIS: bird's-foot trefoil, black locust, crown vetch, oriental bittersweet.	X	
Sugar River		
Cut brush between sand prairie trail and river	X	
Treat reed canary grass around wetland near canoe launch	X	
Replace dead trees in lowers as needed	X	
PIS: bird's-foot trefoil, black locust	X	
Sugar River Alder		
Mow invasive understory vegetation and clear cedars north of trail marker #5	X	
Treat resprouts between remnant prairies on northeast side of preserve	X	
Remove walnuts and cedars in central prairie	X	
Monitor for PIS	X	
Trailside		
Monitor for PIS	X	
Trask Bridge		
Plant wetland plugs in no mowed areas	X	
Monitor for PIS	X	
Two Rivers		
Mow set-aside areas 12" high once a year		X

# 2024 Prairie Plantings



R. Robert Funderburg



69 Acres



## PRIORITY CLEARING PROJECTS

FORESTRY MOWING	
Preserve	Objective
Colored Sands	Remove sumac southwest of hawk banding station
Funderburg	Remove invasive brush along 2024 prairie plantings
	Supervise forestry mowing contract along west boundary
	Remove remaining brush north of contract project area if time allows
Kieselburg	Remove brush along trail southwest of fen
Kilbuck Bluffs	Install firebreak around inholding along South Bend Rd.
Kishwaukee Gorge	Remove invasive brush and mesophytic trees in woods
Kishwaukee River	Continue invasive species removal in high quality section of woods along river
Klehm	Assist arboretum with forestry mowing and tree removals
Severson Dells	Remove invasive species from Nature Preserve
Stone Bridge	Remove brush in savanna, along entry drive, and in waterway
Sugar River Alder	Remove brush in and around prairie remnants
	Open up edge of remnant southeast of sand prairie

HAND CLEARING	
Preserve	Objective
Blackhawk Springs	Continue removing brush and thinning canopy in high quality areas of 'big woods'
Colored Sands	Handcut brush out of prairie remnant in Nature Preserve
Deer Run	Remove brush and treat reed canary grass in oak grove at trail marker 12
Ferguson	Handcut brush out of prairie remnant
Funderburg	Cut and pile downed trees in contract cleared area
	Thin tree line east of long lane
	Continue removing brush on slopes overlooking skunk cabbage patches
Headquarters	Continue invasive woody removals along bike path and in front prairie
Jensen	Remove trees/brush to enhance habitat for <i>Artemesia dracunculus</i>
Kieselburg	Continue work to remove black alder and willows from high quality wetland
Kishwaukee Gorge	Remove buckthorn and other invasives from high quality woods
Kishwaukee River	Clear rivers edge along forestry mowed areas
Kishwaukee River	Continue clearing callery pear from prairie planting as needed
Rotary	Hand clear and treat brush around twinleaf
	Hand clear and treat brush in savanna south of twin leaf
Roland Olson	Remove trees/ brush from entrance prairie plantings

Seward	Cut and treat brush in prairie around quarried area
	Cut and treat brush in prairie remnants
Sugar River	Cut brush between sand prairie trail and river
Sugar River Alder	Clear red cedar grove where high quality prairie indicator plants persist
	Remove cedars, walnuts, and black oaks from around prairie remnants



## 2024 PRESCRIBED BURN PLANS



2024 PRESCRIBED BURN PLANS					
LOCATION	PLANNED ACRES	SPRING ACRES	DATE	FALL ACRES	DATES
ATWOOD HOMESTEAD	53				
BLACKHAWK SPRINGS	429				
CEDAR CLIFF	126				
CLAYTON ANDREWS	88				
COLORADO SANDS	168				
COUNTY LINE	119				
CROOKED RIVER	208				
DEER RUN	88				
ESPENSCHIED MEMORIAL	20				
FERGUSON	278				
FOUR LAKES	11				
FULLER MEMORIAL	96				
FUNDERBURG	176				
GROVE CREEK	71				
HARTLEY MEMORIAL	40				
HEADQUARTERS	7				
HONONEGAH	65				
INDIAN HILL	0				
J. NORMAN JENSEN	9				
KIESELBURG	106				
KILBUCK BLUFFS	78				
KISHWAUKEE GORGE	96				
KISHWAUKEE RIVER	140				
KLEHM ARBORETUM	7				
LAONA HEIGHTS	5				
LEDGES	8				
MACKTOWN	46				
MILLRACE ISLE	0				
OAK RIDGE	108				
PECATONICA RIVER	137				
PECATONICA WETLANDS	80				
ROCKFORD ROTARY	84				
ROLAND OLSON	78				



2024 PRESCRIBED BURN PLANS					
LOCATION	PLANNED ACRES	SPRING ACRES	DATE	FALL ACRES	DATES
SEVERSON DELLS	213				
SEWARD BLUFFS	84				
STONE BRIDGE	11				
SUGAR RIVER ALDER	366				
SUGAR RIVER	165				
<b>TOTAL</b>	3,864				